

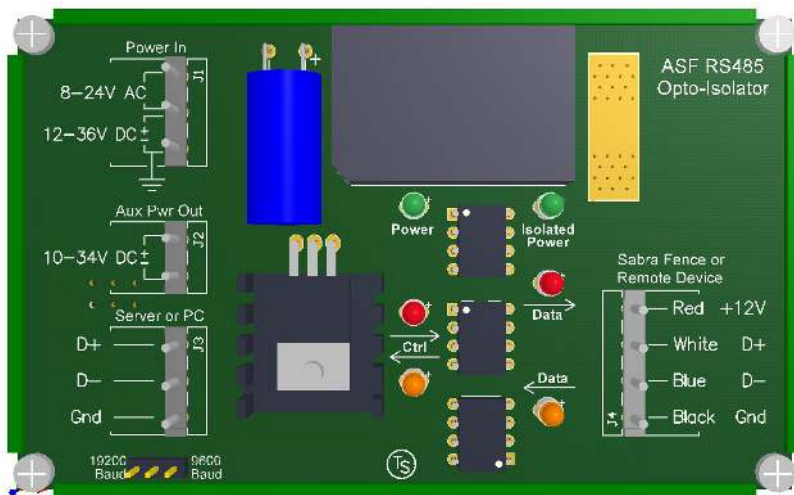
### Purpose

ASF SabraFence is a microcontroller driven Sensor based Vibration detection system. It operates over a 4 wire power and communications cable system.

The ASF SabraFence ICAP Module is a custom design device for providing galvanic isolation between the Power and Communications Circuitry for the protection of the ASF Sabra Fence hub and attached equipment.

Each ASF Sabra Fence ICAP Module forms the head or start of an ASF Sabra Fence Chain of sensors.

The ASF Sabra Fence ICAP Module provides isolated 12V DC power and RS485 communications to each chain of sensors to at least 1500VDC. It can also be used as a repeater for very long or noisy installations.



### Transducer Specifications

#### PHYSICAL

Weight	150G
Operating Temperature	-20OC to 50 OC
Humidity	0% - 95% Non Condensing
Dimensions	120mm x 1500mm x 50mm

#### ELECTRICAL

Input Voltage	12—48VDC less than 300mA for 750m of chain
---------------	--

#### Connections

Physical Data Input / Output	2 wire RS485
------------------------------	--------------

Protection	Output Power Short Circuit Output Power Over Load
------------	--

The specifications and descriptions of products and services contained in this data sheet were correct at the time of publishing. ASF reserves the right to change specifications or withdraw products without notice.

